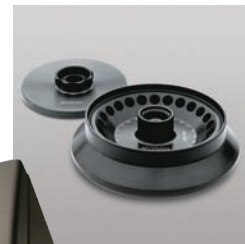


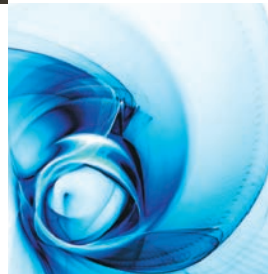
Life Science & Cell Culture Application Packages

For Allegra general purpose centrifuges.



Brilliance
at every turn.





IT'S ABOUT CONVENIENCE. AND CONFIDENCE.

By design, application packages from Beckman Coulter make your life simpler. Not only can you order everything you need under just one part number, but your work also becomes more efficient. All the items in the package—including the instrument, rotors, adapters, and on—are created to perform together. You can expect easier, faster runs and consistently reliable results. Better still, our scientists are available for consultation. It's a complete package in every way.

ALLEGRA CENTRIFUGES. RAISING THE BAR FOR WHAT'S ON THE BENCH.

The Allegra suite of general purpose benchtop centrifuges offers you famous Beckman dependability, along with some truly unmatched advantages. In the lineup, you'll find industry-leading g-force, the best swinging bucket in the industry, and much more. Depending on your exact needs, there's an Allegra for you.



X-30, X-12, X-15R INSTRUMENT COMPARISON			
	Allegra X-30 Series	Allegra X-12 Series	Allegra X-15R
Programs	—	10 user-defined	10 user-defined
Electrical	100V, 50/60 Hz / 120V, 50/60 Hz / 230V, 50/60 Hz / 230V, 50/60 Hz with CCC plug	200V, 50/60 Hz / 208V, 60 Hz / 230V, 50 Hz	200V, 50/60 Hz / 208V, 60 Hz / 230V, 50 Hz
Set Temperature Range (Refrigerated models only)	-20° C to +40° C	-10° C to +40° C	-10° C to +40° C
Weight:			
Ambient	48 kg (106 lb)	—	—
Constant Temperature	—	121 kg (267 lbs) [†]	—
Refrigerated	78 kg (172 lb)	121 kg (267 lbs)	128 kg (283 lb)
Dimensions:			
Ambient/ Constant Temperature	46.0W x 55.0D x 35.5H cm/ 18.1W x 21.7D x 14.0H in	76.2W x 62.2D x 34.3H cm/ 30.0W x 24.5D x 13.5H in	—
Refrigerated	46.0W x 70.7D x 37.0H cm 18.1W x 27.8D x 14.6H in	76.2W x 62.2D x 34.3H cm 30.0W x 24.5D x 13.5H in	76.2W x 62.2D x 34.3H cm 30.0W x 24.5D x 13.5H in

[†]The constant-temperature Allegra X-12 utilizes a refrigeration system preset to 20° C.



Wash, clarify, concentrate, harvest and separate cells and tissues from cultures. From mammalian to bacterial cells and everything in between, our Cell Culture Application Package is designed to deliver the results you need. Run 15 mL or 50 mL tubes. Ideal for processing cell cultures in large-, medium- and mini-scales. Increase laboratory safety with available BioCertified** bucket covers (not included).

CELL CULTURE APPLICATION PACKAGE

Includes instrument, swinging bucket rotor, buckets, (4) 50 mL conical tube adapters, and (4) 15 mL conical tube adapters.

	Allegra X-30 Series	Allegra X-12 Series	Allegra X-15R
Swinging Bucket Rotor	SX4400 Rotor	SX4750 or SX4750A Rotor	SX4750 or SX4750A Rotor
15 mL Conical Tube Capacity	20	56	56
15 mL Conical Tube Capacity*	36	—	—
50 mL Conical Tube Capacity	12	28	28
50 mL Conical Tube Capacity*	16	—	—
Max. Speed (Swinging Bucket Rotor):			
Ambient/Constant Temperature	4,200 rpm	3,750 rpm	4,750 rpm
Refrigerated	4,700 rpm		
Max. RCF (Swinging Bucket Rotor):			
Ambient/Constant Temperature	3,398 x g	3,270 x g	5,250 x g
Refrigerated	4,255 x g		
Order Numbers:			
Ambient/Constant Temperature			—
Refrigerated			

OPTIONAL BIOSAFE[†] BUCKET COVERS

Instrument	Order Number
Allegra X-30 Series (set of 4)	392266
Allegra X-15R / X-12 Series (set of 2)	392805



Ideal for high-throughput and high g-force microplate applications, as well as recovering protein precipitates, soluble proteins and elements in supernatant released from cells or tissues cultured in plates. Our Microplate Application Packages enable speedy preparation of your samples for downstream applications including UV-VIS absorbance, fluorescence, luminescence, PCR and real-time PCR.

MICROPLATE APPLICATION PACKAGE

Includes instrument, rotor, and microplate carriers.

	Allegra X-30 Series	Allegra X-12 Series	Allegra X-15R
Swinging Bucket Rotor	S6096 Rotor	SX4750 or SX4750A Rotor	SX4750 or SX4750A Rotor
Microplate Capacity	2 x 3 Microplates 2 x 1 Deep-Well Plates	4 x 4 Microplates 4 x 1 Deep-Well Plates	4 x 4 Microplates 4 x 1 Deep-Well Plates
Max. Speed (Swinging Bucket Rotor):			
Ambient/Constant Temperature	4,700 rpm	3,750 rpm	4,450 rpm
Refrigerated			
Max. RCF (Swinging Bucket Rotor):			
Ambient/Constant Temperature	2,721 x g	2,885 x g	4,060 x g
Refrigerated			
Order Numbers:			
Ambient/Constant Temperature			—
Refrigerated			

* Cannot be used with the BioSafe bucket covers.

† BioSafe and BioSafety are terms intended to describe the enhanced biocontainment features of our products.

BIO ** BioCertified is a term used to describe our products which have been tested and validated to demonstrate containment of microbiological aerosols by an independent, third-party facility (Health Protection Agency, Porton Down, UK or USAMRIID, Ft. Detrick, MD, USA). Improper use or maintenance may affect seal integrity and, thus, containment.



Minimize contamination from broken or leaking tubes with Aerosolve canisters and tube racks. Clear plastic and open rack design allow for viewing from top to bottom, contributing to laboratory safety. Each canister seals with an O-ring and is autoclavable up to 121° C.

BIOSAFE[‡] AEROSOLVE CANISTER PACKAGE

Includes instrument, swinging bucket rotor, buckets, (4) Aerosolve canisters, (4) 50 mL conical tube racks, and (4) 15 mL conical tube racks.

	Allegra X-12 Series	Allegra X-15R
Swinging Bucket Rotor	SX4750 or SX4750A Rotor	SX4750 or SX4750A Rotor
15 mL Tube Capacity	24	24
50 mL Tube Capacity	16	16
Max. Speed (Swinging Bucket Rotor):		
Constant Temperature Refrigerated	3,750 rpm	4,750 rpm
Max. RCF (Swinging Bucket Rotor):		
Constant Temperature Refrigerated	3,270 x <i>g</i>	5,250 x <i>g</i>
Order Numbers:		
Constant Temperature Refrigerated		—

HIGH-SPEED APPLICATION PACKAGE

Includes instrument and fixed-angle rotor.

	Allegra X-30 Series
Fixed-Angle Rotor	F2402H Rotor
5 mm Tube Capacity	30
7 mm Tube Capacity	30
Max. Speed (Fixed-Angle Rotor):	
Ambient	16,000 rpm
Refrigerated	18,000 rpm
Max. RCF (Fixed-Angle Rotor):	
Ambient	23,511 x <i>g</i>
Refrigerated	29,756 x <i>g</i>
Order Numbers:	
Ambient Refrigerated	



For general-purpose applications requiring high-speed centrifugation, our BioCertified** High-Speed Application Package delivers excellent performance with class-leading RPMs and g-forces in a medium-capacity instrument. The package's fixed-angle rotor provides 29,756 x *g* for microtubes, allowing you to run more applications, achieve results more quickly and save precious time in the lab. Perfect for protein fractionation, nanoparticle separations, and DNA/RNA isolation.



[‡] BioSafe and BioSafety are terms intended to describe the enhanced biocontainment features of our products.

BIO C** BioCertified is a term used to describe our products which have been tested and validated to demonstrate containment of microbiological aerosols by an independent, third-party facility (Health Protection Agency, Porton Down, UK or USAMRIID, Ft. Detrick, MD, USA). Improper use or maintenance may affect seal integrity and, thus, containment.

Beckman Coulter, the stylized logo, Aerosolve, and Allegra are trademarks of Beckman Coulter, Inc. and are registered with the USPTO.

For Beckman Coulter's worldwide office locations and phone numbers, please visit "Contact Us" at www.beckmancoulter.com

B2011-12725-5K-LC

© 2011 Beckman Coulter, Inc.

PRINTED IN U.S.A.