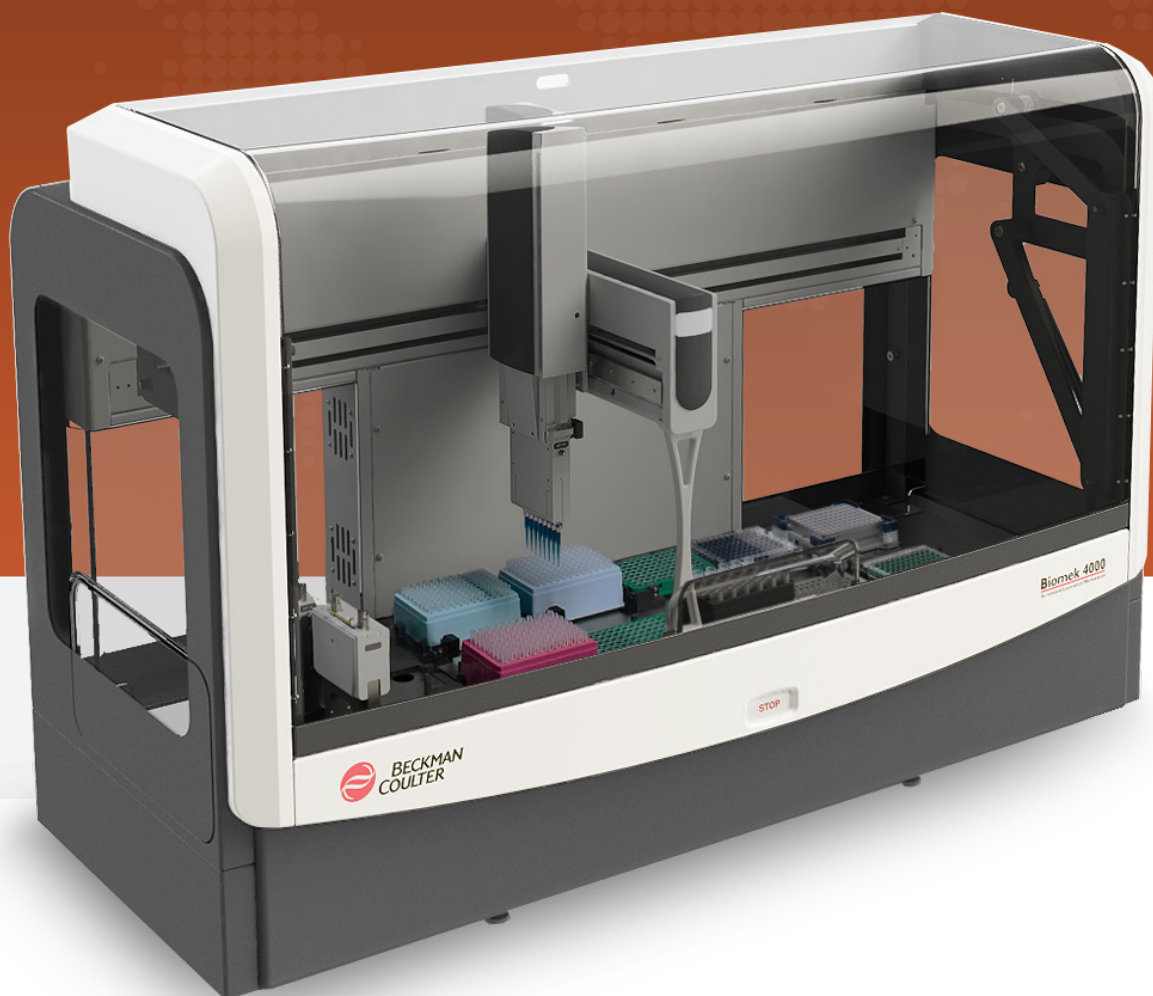


# BIOMEK 4000 LABORATORY AUTOMATION WORKSTATION

INTUITIVE SOFTWARE. MAXIMUM VERSATILITY.



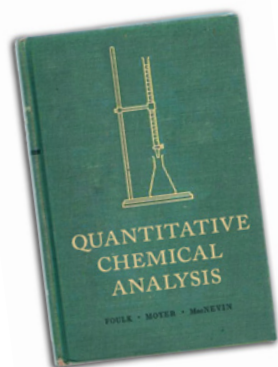
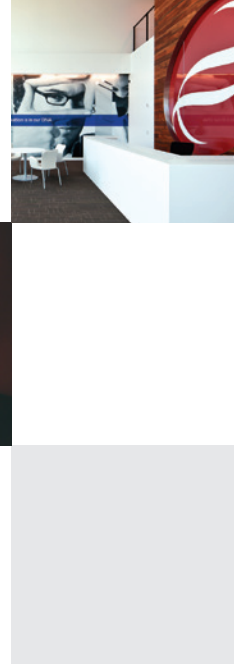
Discovery  
*in motion.*

 **BECKMAN  
COULTER**  
*Life Sciences*



FAST AND SIMPLE SETUP EASY  
DEVICE INTEGRATION APPLICATIONS  
EXCELLENCE ICON-DRIVEN  
USER INTERFACE EXPANDABLE  
WORKSURFACE

IT'S TIME TO STREAMLINE  
YOUR WORKFLOW



- 1986** *Biomek 1000 Laboratory Automation Workstation*
- 1992** *Patent for Interchangeable Tools Granted*
- 1994** *Biomek 2000 Laboratory Automation Workstation*
- 2004** *Biomek 3000 and Biomek NX Laboratory Automation Workstations*
- 2012** *Biomek 4000 Laboratory Automation Workstation*

## > Designed for the demands of today. And tomorrow.

As our world becomes a faster and faster-paced environment, businesses from banking to manufacturing have turned to automation to reduce costs and create efficiencies in their daily operations. And life sciences are no exception—the pressure to streamline workflow and automate laboratories is greater than ever.

Delivering a more efficient discovery process is at the heart of every solution we at Beckman Coulter create. Since the launch of the Biomek 1000 Laboratory Automation Workstation in 1986, we have continued to develop more accurate, versatile and intuitive platforms. And today, the evolution continues.

The Biomek 4000 Laboratory Automation Workstation is truly intelligent automation. From its enhanced worksurface with interchangeable tools to its flexible, icon-driven software, the Biomek 4000 system adapts to your ever-changing research needs. It revolutionizes everything, from the speed at which you can conduct your research to the ease with which you can complete it—all to move your discovery process forward at an incredible pace.

# THE BIOMEK 4000 WORKSTATION

EMPOWERING DISCOVERY.

The world of life sciences grows more sophisticated and competitive every day. The desire to find answers, to leave a mark and make a contribution only gets stronger. That's why at Beckman Coulter, we are dedicated to providing products that

## Biomek 4000 Hardware

*The embodiment of adaptability.*

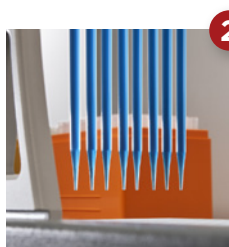
At the heart of the Biomek 4000 Workstation is its hardware. Built with rugged, robust features, this liquid handling system offers reliable performance that flexes and grows with your needs.

The hardware was designed with adaptability in mind. Interchangeable tools in various volume ranges cover the breadth and depths of today's life sciences applications. The modular deck configuration allows you to tailor the device according to your specific application. Up to 12 deck positions provide sufficient space for the automation of all major life sciences tasks. Storage is moved out of the deck area for more efficient use of the space.

New and improved tools offer even higher throughput for assays greater than 200  $\mu\text{L}$  and up to 1000  $\mu\text{L}$  volume transfers.

The improved wash tool enables tip touches and more accurate volume dispenses.

And as with all Biomek systems, the Biomek 4000 Workstation can be easily integrated with other accessories or devices as your research demands.





enable powerful discoveries. With instrumentation that performs applications in science, industry and medicine, our history is rich with innovations that produce far-reaching benefits.

As part of the Beckman Coulter family of liquid handling solutions, the Biomek 4000 system delivers precise, efficient and reliable performance—so that you can find the answers you need, when you need them, and trust in your results.

### 1 Enclosure\*

Even though the Biomek 4000 Workstation fits comfortably into a laminar flow hood, it's also available with an enclosure. The small footprint of the enclosure will fit neatly on your lab bench.

### 2 Expanded dynamic volume range

From 1  $\mu\text{L}$  to 1000  $\mu\text{L}$ , the Biomek 4000 Workstation offers precise and robust pipetting, both single-channel and 8-channel.

### 3 Maximizes deck space

The off-deck tool rack and liquid waste disposal uses the workstation's space more efficiently and allows for 12 deck positions to hold labware.

### 4 Improved wash tool performance

Allows for dispensing against the wall of a well, tip touches, bulk dispense and per liquid volume calibration to maximize the efficiency of your assay.

### 5 Accessories

For complete automation, optional accessories for cooling, heating and shaking are available.

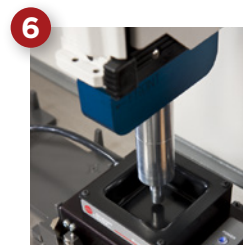
### 6 Fully automated deck framing

The AccuFrame tool provides increased accuracy using three-dimensional positioning.

### 7 Additional storage

Storage provided beneath the deck frees up even more precious lab space and keeps all your tools close at hand.

*\*In development.*



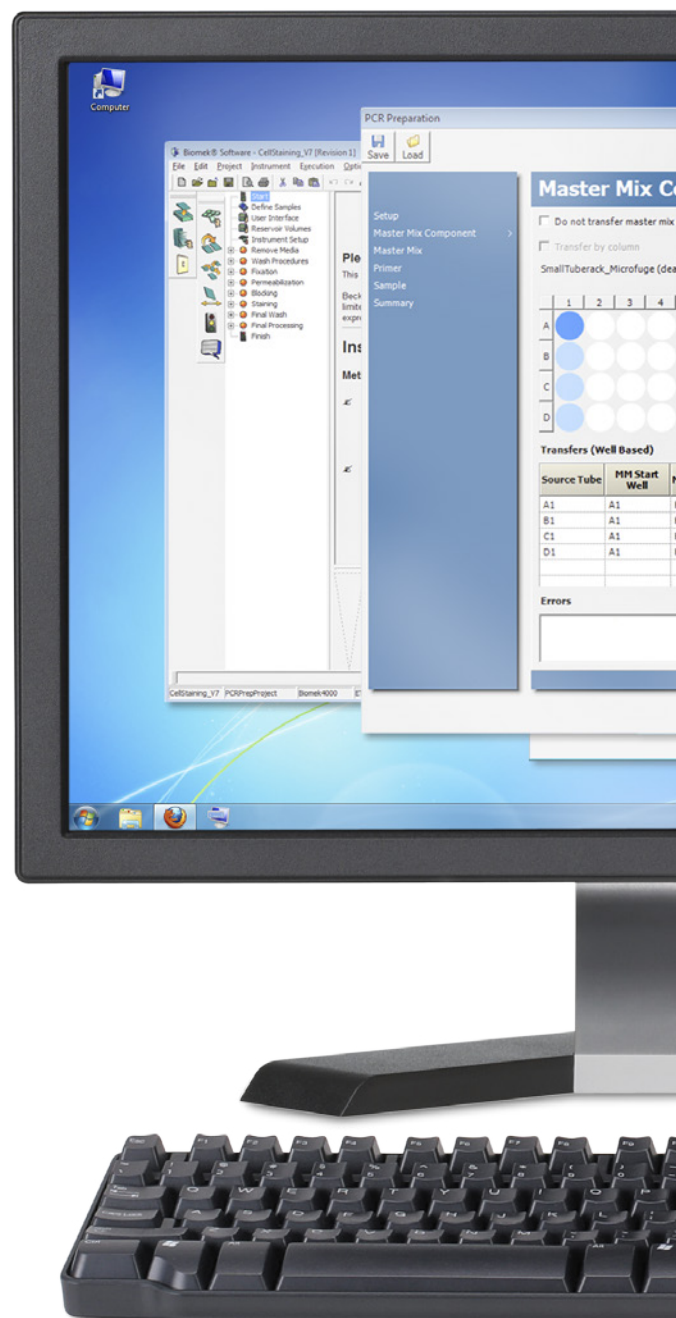
# Biomek 4000 Software

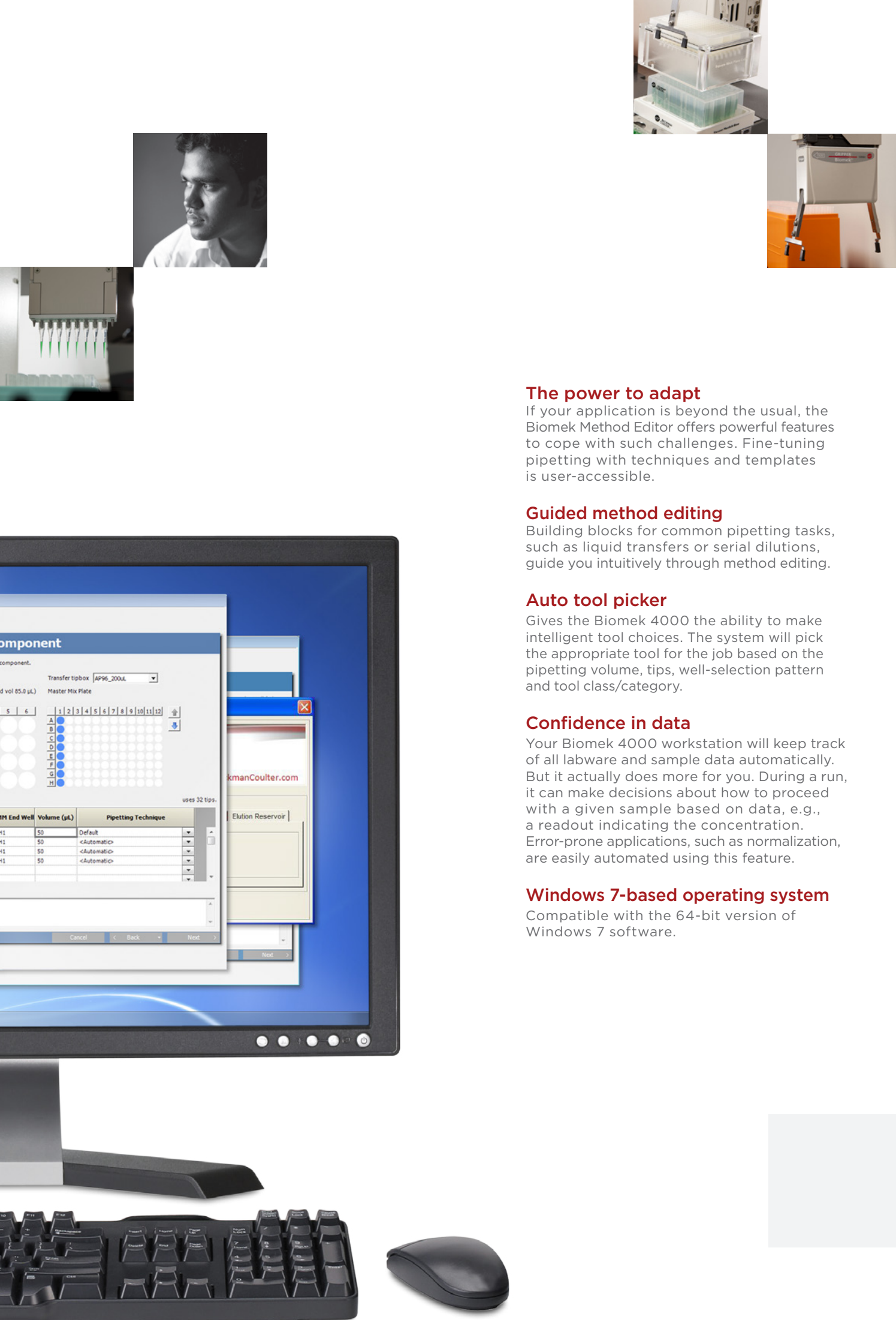
Thinks the way you think. Works the way you work.

Whether you are a first-time automation user or a seasoned professional, the intuitive simplicity and power of Biomek software make it easy to set up, edit and run even the most demanding applications.

Pre-written methods for common life sciences tasks, such as PCR setup and cell staining ensure successful operation from the beginning.

Biomek software offers regulatory compliance with 21 CFR Part II. Access to the system can be controlled and monitored to allow multiple user accounts, grant permission, track revisions and system usage, and enable electronic signatures.





## The power to adapt

If your application is beyond the usual, the Biomek Method Editor offers powerful features to cope with such challenges. Fine-tuning pipetting with techniques and templates is user-accessible.

## Guided method editing

Building blocks for common pipetting tasks, such as liquid transfers or serial dilutions, guide you intuitively through method editing.

## Auto tool picker

Gives the Biomek 4000 the ability to make intelligent tool choices. The system will pick the appropriate tool for the job based on the pipetting volume, tips, well-selection pattern and tool class/category.

## Confidence in data

Your Biomek 4000 workstation will keep track of all labware and sample data automatically. But it actually does more for you. During a run, it can make decisions about how to proceed with a given sample based on data, e.g., a readout indicating the concentration. Error-prone applications, such as normalization, are easily automated using this feature.

## Windows 7-based operating system

Compatible with the 64-bit version of Windows 7 software.



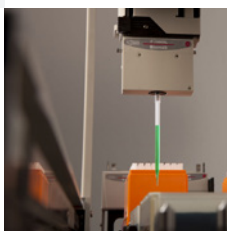
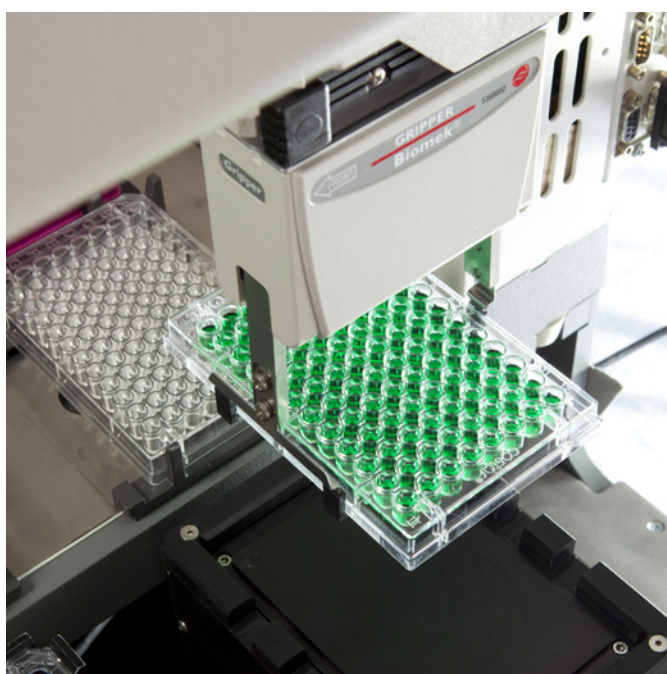
# Evolving Applications

For evolving demands.

---

The challenge in today's life science laboratory is to accomplish more with fewer resources. That's why Beckman Coulter's automation platform is designed to minimize the time you spend on routine laboratory tasks and maximize the time you spend searching for a new drug, making a powerful scientific discovery or finding the next breakthrough in Genomics.

Developed as a result of listening to researchers' unique needs, the Biomek 4000 system utilizes automated methods that help you achieve greater efficiency, greater throughput and improved turnaround time. Use our preconfigured methods, or easily create your own. No matter what you choose, the Biomek 4000 system is bound to take your productivity to new levels.







# Biomek Methods

Turnkey solutions for standard applications.

While the Biomek 4000 Workstation adapts to almost any life sciences research protocol, Beckman Coulter offers ready-to-go methods for the most abundant applications in the laboratory.

## PCR Setup Method

Automating the PCR assay setup process certainly has its advantages: Time-consuming and error-prone manual pipetting tasks can be omitted and the risk of cross-contamination is minimized. The Biomek 4000 PCR setup method creates a PCR application based on your specific input.

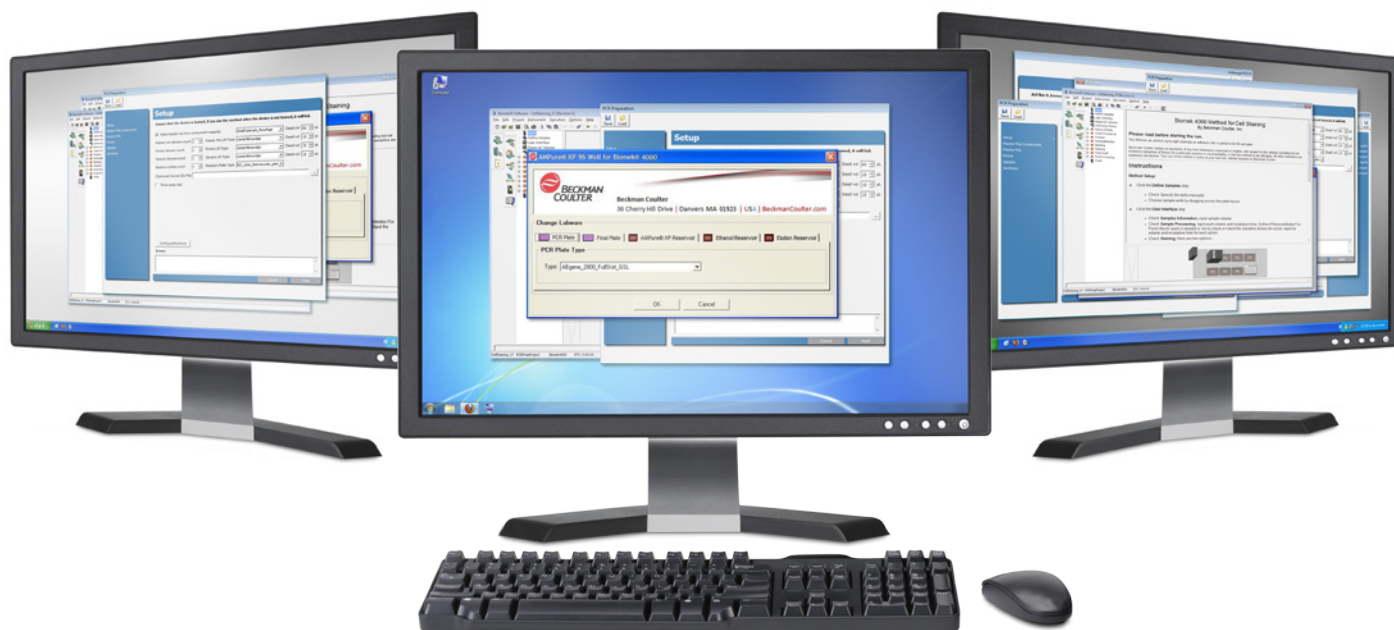
Standardized results and increased productivity are just the beginning. You'll get high sample-to-sample and lab-to-lab reproducibility as well as fast PCR setup.

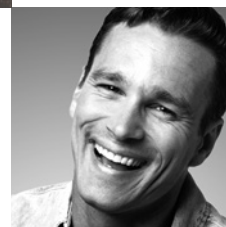
*Note: The PCR Cleanup Method with the AMPure XP kit is in development.*

## Cell-Staining Method

Many researchers use cell-staining techniques in order to better visualize cells and their components under a microscope, but the process can be labor intensive and time consuming when done manually.

With the Biomek 4000 system, you can easily automate numerous wash and incubation steps. The intuitive software will show you exactly how to set up the Biomek worksurface, while still giving you the flexibility to create your own method based on your defined application.





# The Biomek 4000 Workstation

**Adaptable. Modular. Reliable.**

---

At Beckman Coulter, our legacy of designing and manufacturing quality instrumentation is unparalleled in the industry. Our commitment to maintaining integrity applies to every part of the development process. Using Lean principles, we strive to achieve near perfection.

The Biomek 4000 system is no exception. With more functionality, reliability and versatility, our newest automation workstation is incredibly intelligent and adaptable. Because we realize that as your needs grow and change, you need a platform that grows right along with you.

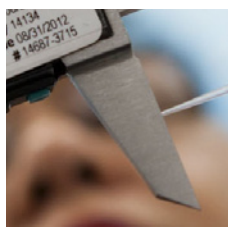
## Service and Support

Laboratories around the world rely on Beckman Coulter's promise of quality, integrity and innovation. Providing excellent customer support is also one of our hallmarks. Our diverse portfolio of laboratory solutions provides researchers with a comprehensive line of life science tools.

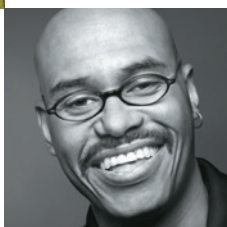
Our state-of-the-art customer support center was created to provide an incomparable level of support, because we know your instrumentation needs to be running at its top efficiency at all times. In addition to instrument maintenance, we also offer product training, webinars, applications support and preventative maintenance agreements to ensure your instrumentation is at its peak performance at all times.

**“There is no satisfactory substitute for excellence.”**

*Arnold O. Beckman, Ph.D.*







## A legacy of innovation. A passion for excellence.

At Beckman Coulter Life Sciences, we're focused on discovering new ways to help scientists streamline and automate their research. In the words of our founder, Dr. Arnold O. Beckman, "There is no satisfactory substitute for excellence." We pride ourselves in using groundbreaking technology to manufacture research instrumentation to the highest standards and providing excellent applications support to our customers.

For over 75 years, we've been building a global reputation in academic and biopharmaceutical laboratories, where our life science research instrumentation is relied upon to help scientists execute vital research. Whether helping to solve complex biological problems, investigate the causes of disease, or find potential new cures, Beckman Coulter Life Sciences is focused on combining state-of-the-art technology with leading-edge science to produce total-system solutions for laboratory researchers.

[www.biomek4k.com](http://www.biomek4k.com)



All trademarks are the property of their respective owners.  
Beckman Coulter, the stylized logo, AMPure and Biomek are trademarks of Beckman Coulter, Inc. and are registered with the USPTO.

For Beckman Coulter's worldwide office locations and phone numbers, please visit [www.beckmancoulter.com/contact](http://www.beckmancoulter.com/contact)  
B2012-13267-XX-5K

© 2012 Beckman Coulter, Inc.

PRINTED IN U.S.A.