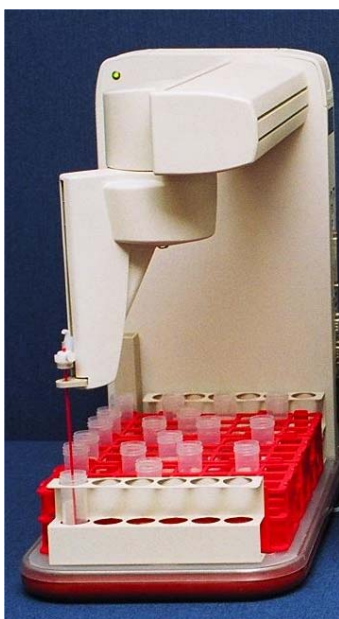


PRODUCT SPECIFICATION

PSA 20.400 Autosampler

PSA's range of autosamplers has been designed with flexibility in mind. The standard configuration of the P S Analytical 20.400 that is provided to link to the P S Analytical Millennium range of products is shown below.



Height:	52cm
Width:	29cm
Depth:	50cm
Max Cup Height:	16cm
Control:	RS232
Type:	Random access XYZ design
Voltage:	110/240v
Washpot:	Integrated

The PSA 20.400 Autosampler is supported in the Millennium software from version 1.08 and above. The PSA 20.400 holds 12 standard cups (29mm diameter) plus 3 sample racks. As standard the system is supplied with 3 x A400T005 trays as these fit 50ml containers. This means as standard you have 75 samples. If you prefer a different tray configuration please specify at time of ordering.

TRAY TYPES CURRENTLY AVAILABLE

PART NUMBER	TRAY NUMBER	NUMBER & SIZE OF HOLES (Bottle Part Number & Volume)
A400T001	Tray 192	60 x 16mm holes (A400V001, 15ml)
A400T003	Tray 282	90 x 13mm holes (Not provided by PSA)
A400T004	Tray 132	40 x 20mm holes (Not provided by PSA)
A400T005	Tray 75	21 x 30mm holes (A400B001, 50ml)
A400T006	Tray 94	24 x 29mm holes (Z000B007, 30ml)

*Millennium Merlin and Excalibur Systems are PSA Tradenames.